

# HumaScope Stereo

## Zoom Stereo Microscope

### State of the art

- > Binocular stereo microscope
- > With reflected and transmitted illumination
- > Latest LED illumination technology
- > Excellent optics



### Excellent value for money and highest flexibility

- > Versatile and cost-efficient zoom stereo microscope
- > Broad range of functions for observation and documentation of specimen in medicine and life sciences.
- > Comfortable eyepieces ensure fatigue-free, comfortable observation.
- > Universal LED integrated in illumination stand

# HumaScope Stereo

## Zoom Stereo Microscope

<b>Technical data</b>	<b>HumaScope Stereo</b>	REF
	<i>Binocular stereo microscope</i>	14900
	<i>Trinocular stereo microscope</i>	14901
<b>Eyepiece</b>	WF 10 x (view field 20 mm)	
	Diopter adjustment -5... +5 on	
	both oculars	
	Rubber eyeguard	
	Inclination 45°	
<b>Objective</b>	Interpupillary distance 55–75 mm	
	<b>Zoom magnification</b> 0.7–4.5	
	<b>Total magnification</b> 7–45 x	
	<b>Visual field</b> 28.5 ~ 4.5	
	<b>Working distance</b> 88 mm	
	<b>Vertical movement</b> 55 mm ≤ h < 140 mm	
<b>Light source</b>	<b>transmitted light</b> LED 7 V, 5 W adjustable	
	<b>reflected light</b> Annular LED illumination	
	3.5 V, 0.3 W adjustable	
<b>Weight</b>	5.36 kg	
<b>Size</b>	230 x 170 x 470 mm	
<b>Power supply</b>	85–240V, 50–60 Hz	



> HumaScope Stereo with HumaScope Pad 500

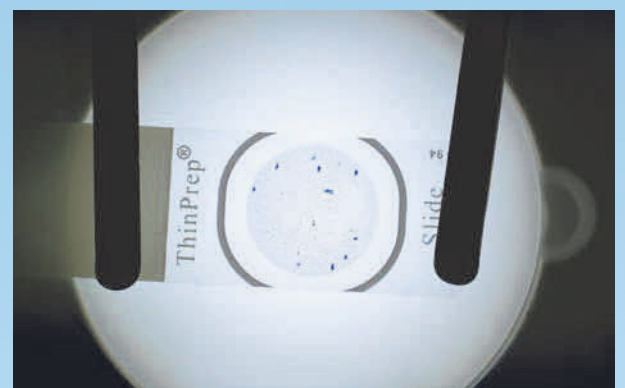


> Reflected light



> Transmitted light

<b>Accessories</b>		REF
Wide Field Eyepiece WF 10 x (22 mm)		14900/1
Wide Field Eyepiece WF 15 x (15 mm)		14900/2
Wide Field Eyepiece WF 20 x (12 mm)		14900/3
Wide Field Eyepiece WF 25 x (9 mm)		14900/4
Divisional Wide Field Eyepiece 10 x (20 mm) 0.1 mm/Div		14900/5
Objective 0.5 x W.D. 137 mm		14900/6
Objective 0.75 x W.D. 103 mm		14900/7
Objective 1 x W.D. 88 mm		14900/8
Objective 1.5 x W.D. 48 mm		14900/9
Objective 2 x W.D. 29 mm		14900/10
Trinocular Adaptor 1x for CCD Camera		14900/11
Trinocular Adaptor 0.5x for CCD Camera		14900/12
HumaScope Pad 500		14000/200



> Transmitted illumination